

Pedestrian Crosswalk System: Rectangular Rapid-Flashing Beacon



Quote Number: _____

TAPCO Contact: _____

Customer:	Document Date:	
	Project Name:	
	Project ID:	
	Customer Contact:	
Installation Address/Location:	Phone Number:	
	Email:	
	Lead Time:	
		Lead time upon submittal approval.

Documentation Included:
Pole Layout Drawing
Detection Devices
Controller
Communication Devices
Warning Devices
Power Source
Cabinet
Mounting Equipment
Static Signs

Special Conditions
Scope of work will be required prior to accepting purchase order
Bid as alternate (see below summary of deviations from bid specification).
System contains custom components and is not returnable

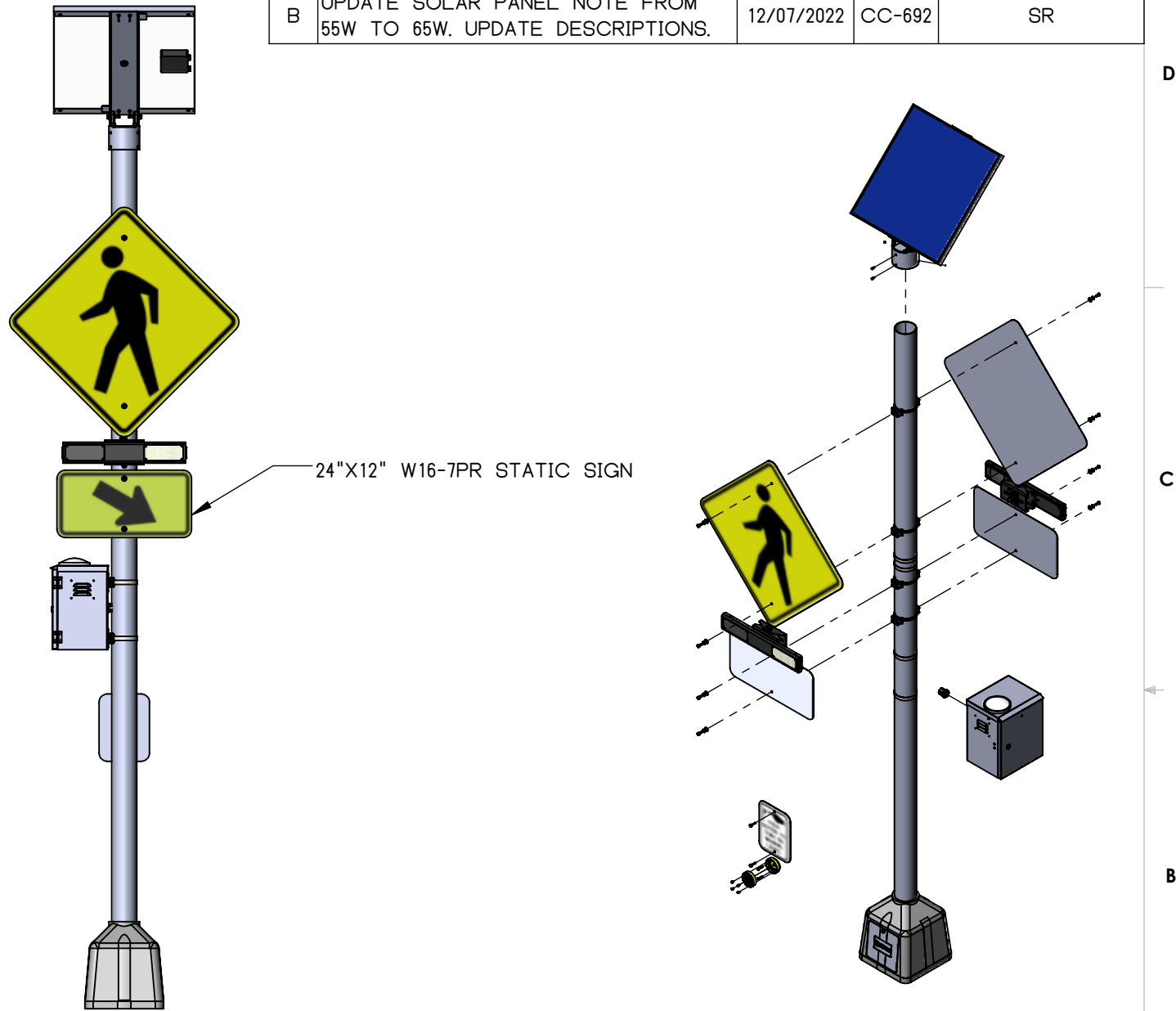
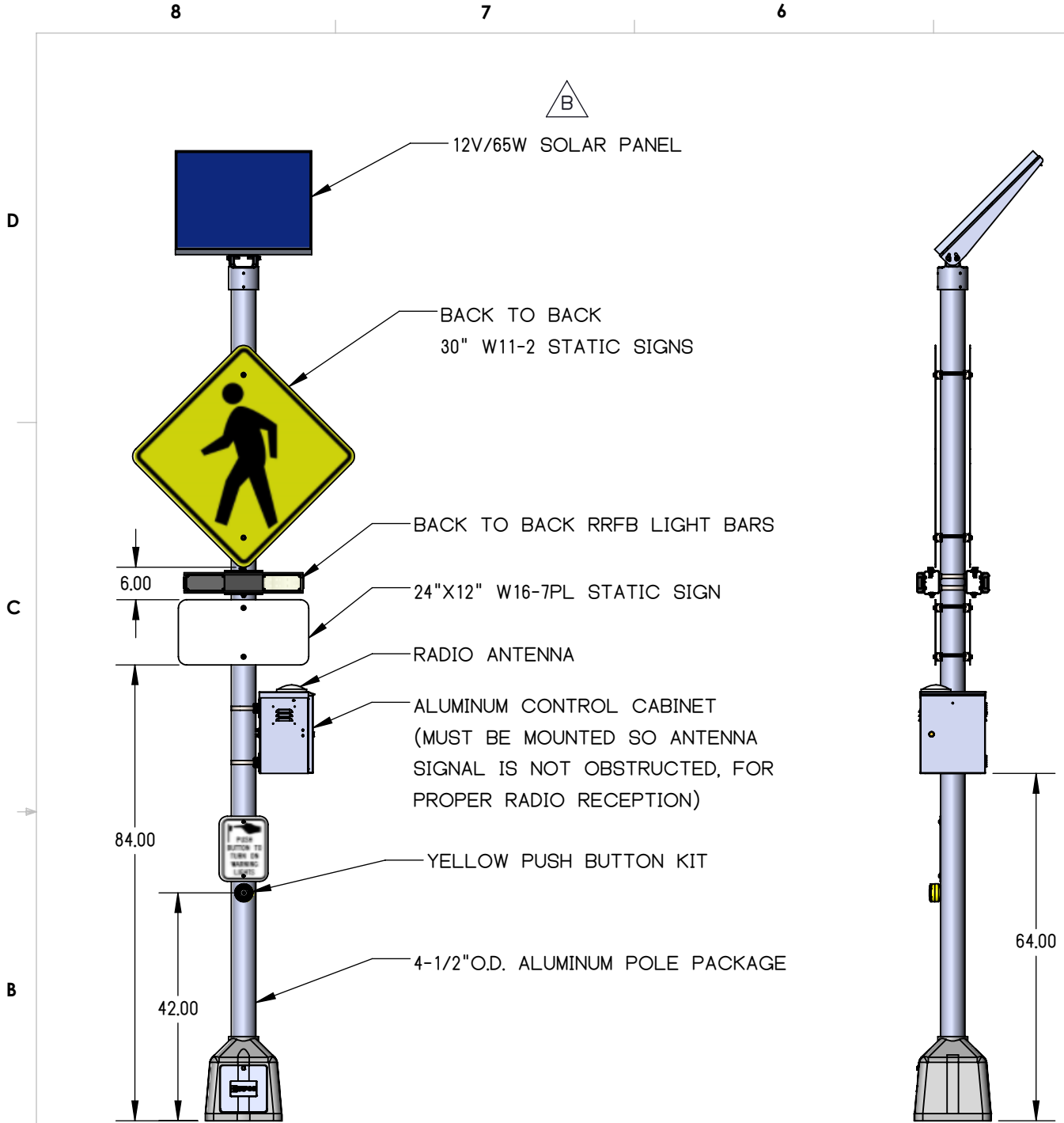
Alternate System Information:

Proprietary information that is stamped (Proprietary Information) should not be shared with others outside of the Contractor, Consultant and End user.

X _____
Customer Approval Signature

X _____
Date

REVISIONS				
REV.	DESCRIPTION	DATE	ECN #	AUTHOR/APPROVED
A	INITIAL RELEASE	5/7/2018	N/A	C.G./J.P.
B	UPDATE SOLAR PANEL NOTE FROM 55W TO 65W. UPDATE DESCRIPTIONS.	12/07/2022	CC-692	SR



- NOTES:**
1. ORIENT SOLAR PANEL TOWARDS SOUTHERN SKY FOR MAXIMUM SOLAR EXPOSURE
 2. CONTROL CABINET HEIGHT MAY VARY.
 3. SNAP LOCKS ARE PROVIDED, STANDARD 3/4" S/S BANDING IS RECOMMENDED
 4. J-BOLTS NOT SHOWN
 5. ALL DIMENSIONS ARE FOR REFERENCE ONLY
 6. STATIC SIGNS NOT INCLUDED IN SYSTEM

TAPCO
TRAFFIC & PARKING CONTROL CO., INC.

C:\SWPDM\TAPCO\FDM\LEGACY DATA\ENGINEERING\SPECIFICATIONS\600147		INTERPRET GEOMETRIC TOLERANCING PER: ASME Y14.5-2009
MATERIAL		REFERENCE:
FINISH		

TOLERANCE UNLESS OTHERWISE SPECIFIED		TITLE: RRFB, SOLAR 65/50, RADIO, SOP, DS, AMBER, PB, H POLE X2 (30" W11-2 ARRANGEMENT)			
HOLE ϕ	$\pm .003$	DESIGNED BY:		SIZE	DWG. NO.
DEC.	INCH	DRAWN BY:	C. GRAVES	B	600147
X	$\pm .030$	CHECKED BY:	J. PATTERSON		
XX	$\pm .015$				
XXX	$\pm .005$				
ANGULAR	$\pm 0.5^\circ$				
		PROPRIETARY AND CONFIDENTIAL THE INFORMATION CONTAINED IN THIS DRAWING IS THE SOLE PROPERTY OF TAPCO. ANY REPRODUCTION IN PART OR AS A WHOLE WITHOUT THE WRITTEN PERMISSION OF TAPCO IS PROHIBITED.	REV	WEIGHT:	
			B		
				SCALE: 1:28	
				SHEET 1 OF 7	

LED BULLDOG PUSH BUTTON

SPECIFICATIONS

POWER	12 to 36VDC (from control circuit)
PUSH BUTTON	Vandal resistant, ADA compliant
ACTIVATION CONFIRMATION	Red LED and beep confirmation activated when push button is pressed
PUSH BUTTON HOUSING	Yellow aluminum is standard; black available
INSTRUCTIONAL SIGN	9" x 12"; retroreflective sheeting with tamper-resistant mounting screws.
OPERATING FORCE	3 pounds maximum
PEAK CURRENT DRAW	~350mA
BUTTON ENCLOSURE	Aluminum, powder coated
BUTTON MATERIAL	316 stainless steel
IMPEDANCE	5 ohms typical
INSTALLATION	2 holes on 2.0" centers, tapped ¼-20 plus ½" or larger hole for wire access
PUSH BUTTON OUTPUT	Solid-state active-low
OPERATING TEMPERATURE RANGE	-30°F to 165°F (-34°C to 74°C)
DIMENSIONS	3.4" W x 0.9"H x 0.9"D



BULLDOG PUSH BUTTON



R10-25 SIGN

IWS CONTROLLER


SPECIFICATIONS

POWER	Solar Charging for 6VDC and 12VDC systems with Power and Charging Indicator Light
INPUTS	Two digital inputs
OUTPUTS	Two LED device driver outputs; Two digital outputs
PROGRAMMABILITY	Locally using serial input (RS232) or remotely using BlinkLink® via cell modem
PROGRAM ACTIVATION OPTIONS	24/7, Dusk 'til Dawn, BlinkLink® Scheduling, Time Clock, Pushbutton, Radar, or other digital input device
LED-WARNING CONTROL COMPATIBILITY	BlinkerSign®, BlinkerBeacon™, RRFB-XL2™, LegendViz™
CONTROLLER DIMMING	Auto-adjustable via solar panel input for 6V and 12V systems; Auto-adjustable via photocell sensor, if equipped, for 120VAC, 6V and 12V systems
INTERNAL SYSTEM CLOCK	Programmable for Daylight Savings Time, and includes integrated backup battery
SELF-DIAGNOSTIC CAPABILITY	Internal temperature monitor; Battery charging temperature monitor
SOLAR CHARGING	6V and 12V capable, with temperature compensation on 12V
DATA COLLECTION	Collect and store system activation data. Read locally through serial interface or remotely with BlinkLink via cell modem
OPERATING TEMPERATURE RANGE	-40°F to 176°F (-40°C to 80°C)
ENCLOSURE	IP67 rated
ENCLOSURE DIMENSIONS	3.2"W x 3.7"H x 2.5"D



BLINKERBEAM® WIRELESS RADIO

SPECIFICATIONS

POWER	6V and 12VDC with power indicator light
INPUT	1 digital input, micro USB
OUTPUTS	2 digital output lines, host serial lines for over the air serial
PROGRAMMABILITY	Locally using USB port or front-mounted joystick
BACKLIT LCD DISPLAY	4 lines at 21 characters per line
RADIO TYPES	Low Power Device Radio Low Power Activation Radio Standard Low Power Radio Standard Medium Power Radio Standard High Power Radio
CONNECTIVITY	Up to 16 devices on one network
FREQUENCY	License free 900 MHz frequency hopping spread spectrum with 10 different RF patterns to prevent interference between collocated radio systems
RANGE	Up to 900 feet standard or longer with optional antennas; Indoor applications do not use antennas
STATUS LEDES	Red, green, yellow, amber
REGULATORY COMPLIANCE	 and ISED compliant
OPTIONAL OUTDOOR ANTENNAS	Omni Whip Omni Dome Omni Base Station Yagi (for specific applications)
OPERATING TEMPERATURE	-40°F to 176°F (-40°C to 80°C); less than 90% relative humidity
DIMENSIONS	3.2"W x 3.7"H x 2.5"D



RECTANGULAR RAPID FLASHING BEACON

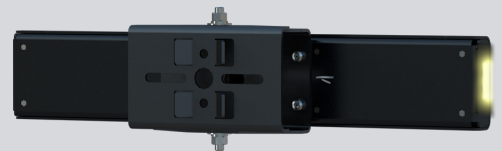
RRFB-XL2™

SPECIFICATIONS

POWER	Low voltage, current controlled from TAPCO controller
CONTROLLER DIMMING	Auto-adjustable via solar panel input for 6V and 12V systems; Auto-adjustable via photocell sensor, if equipped, for 120VAC, 6V and 12V systems. Non-dimming option available.
LIGHT BAR HOUSING	Black powder-coated aluminum
CERTIFICATIONS	NEMA TS2
VEHICLE LED MODULES	7"W x 3"H; 2 arrays of 8 amber LEDs spaced 7" apart, SAE J595 Class 1 Certified
PEDESTRIAN LED MODULES	0.5"W x 1.75"H side-viewable, flash simultaneously with vehicle LED (Field-configurable - optional, one, or both sides)
LED COLOR	Amber
FLASH PATTERNS	Interim Approval 21 compliant Wig-Wag plus Simultaneous (WW + S)
VISIBILITY	Daytime: more than 1,000 feet Nighttime: more than 1 mile
UNIVERSAL MOUNTING BRACKET	Articulates up to 30° Mounts to most common size metal or wood posts
MOUNTING HARDWARE	Banding to round pole, U-bolt to round pole, bolt to square pole
LIFE EXPECTANCY	100,000 hours
TEMPERATURE RANGE	-40°F to 176°F (-40°C to 80°C)
LIGHT BAR DIMENSIONS	22"W x 4"H x 1.5"D



FRONT



BACK



SIDE



TOP

65W SOLAR PANEL

SPECIFICATIONS

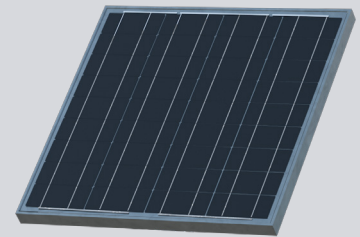
POWER	65W
NOMINAL VOLTAGE	12V
OPEN CIRCUIT VOLTAGE	21.66V
SHORT CIRCUIT CURRENT	3.97A
MAXIMUM POWER VOLTAGE	18.65V
MAXIMUM POWER CURRENT	3.77A
GLASS	High transparent, low iron, tempered
FRAME	Heavy-duty anodized aluminum
CONSTRUCTION	Silicon cells encapsulated in double-layer EVA with a white polymer backing
WEIGHT	10.8lbs
ENCLOSURE	IP67 rated
MOUNTING HARDWARE	Various options available
OPERATING TEMPERATURE RANGE	-40°F to 185°F (-40°C to 85°C)
DIMENSIONS	25.7"W x 25.2"H x 1.4"D

TOP-OF-POLE MOUNTING BRACKET

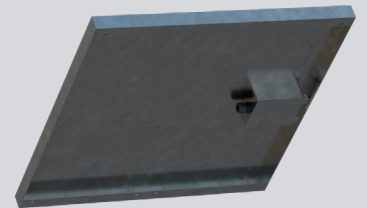
MATERIAL	Aluminum
POLE TYPE	4½" round (shown) or 3" round
MOUNTING HARDWARE	Set screws

SIDE-OF-POLE MOUNTING BRACKET

MATERIAL	Aluminum
POLE TYPE	Universal (4½" shown)
MOUNTING HARDWARE	Banding, U-bolt, or bolt



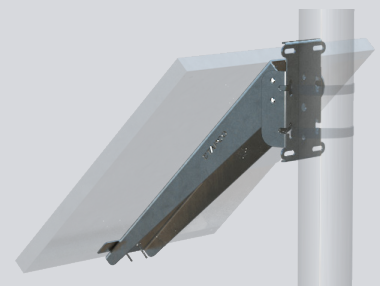
FRONT



BACK



TOP-OF-POLE MOUNTING BRACKET



SIDE-OF-POLE MOUNTING BRACKET

50Ah BATTERY

Sealed Lead-Acid

SPECIFICATIONS

VOLTAGE	12V
CAPACITY AT C/100	50Ah
VENT	Valve Regulated
TERMINAL	I6
NON-SPILLABLE	As defined by Department of Transportation (DOT), International Commercial Airline Organization (ICAO) and International Airline Transport Association (IATA) definitions
WEIGHT	32.23 lbs
OPERATING TEMPERATURE RANGE	-40°F to 176°F (-40°C to 80°C)
DIMENSIONS	7.75"Lx6.49"Wx6.69"H



MEDIUM CONTROL CABINET

CABINET SPECIFICATIONS

CERTIFICATION	NEMA 3R type
MATERIAL	0.080" aluminum
MOUNTING OPTIONS	4 stainless steel studs for various mounting bracket options including banding, U-bolt, wall-mount, square pole and wood post.
HINGES	2 tamper-resistant stainless steel hinges
ACCESS	Replaceable #2 traffic lock with keys
VENTING	Screened vents on cabinet side and door
DRAINAGE	Screened drain holes on bottom of cabinet
UV RESISTANT LABEL	Applied to exterior of cabinet outlining model number, serial number, date of manufacture as well as any applicable regulatory information
CONTROL PANEL	All circuit components are attached or connected to removable control panel for maintenance
DOOR MOUNTED POUCH	Contains system documents
ENCLOSURE DIMENSIONS	12.5"W x 15"H x 9.9"D



FRONT



BACK

UNIVERSAL SIDE-OF-POLE CABINET MOUNTING BRACKET

UNIVERSAL MOUNTING BRACKET

MATERIAL	5052-H32 Aluminum
MOUNTING HARDWARE INCLUDED	U-bolts and Straight Bolts, 3/8-16" (2) 3.5"L, (1) 4.5x6, (1), 4x5.5, (1) 3.5x4.5, (1) 2.375x3.5 (HK01AA)
MOUNTING METHODS ACCEPTED	Through bolts, u-bolts, banding
ACCEPTED POLE TYPES	2-3/8", 3", 3-1/2", 4", 4-1/2" Round, 2" Square Perforated Post
COMPATIBLE CABINETS	Small: 108766-PEM Medium: 108045-PEM (shown) Large: 120652-PEM
HUB EXTENSION	Threaded Pipe Extension (2), 3/4" x 2.5" SCH 40 Aluminum and 1-1/4" x 2.5" SCH 40 Aluminum
BRACKET TO CABINET HARDWARE	Nut, serrated flange, 5/16-18 SS
SECURITY HARDWARE	Tamper Resistant Screw, 1/4-20X0.75, BH Torx
SECURITY HARDWARE TOOL	Torx Driver, T-27 Pin Head, 1/4" Hex Driver
WEIGHT	7 lbs.
DIMENSIONS	12.54"Lx8.14"Wx3.5"D



FRONT - OPEN



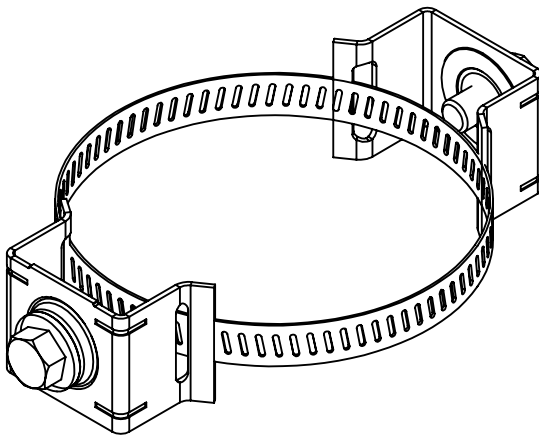
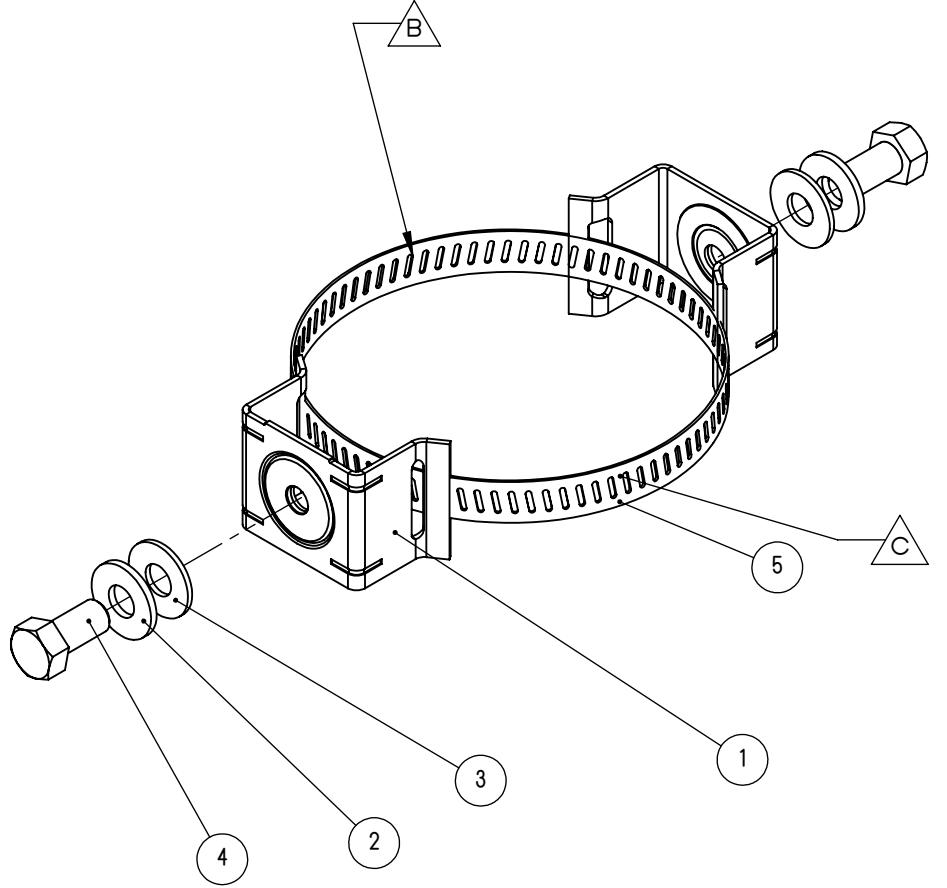
FRONT - CLOSED



BACK - CLOSED

8 7 6 5 4 3 2 1

REVISIONS				
REV.	DESCRIPTION	DATE	CC #	AUTHOR/APPROVED
A	INITIAL RELEASE	-	-	--/--
B	SWITCHED 037-00016 TO 140153	6/17/2019	CC-120	C.G./J.R.P.
C	SWITCHED 140153 TO 037-00016	6/21/2019	CC-250	C.G./J.R.P.



6	126997 (NOT SHOWN)	BAG, RECLOSABLE 10"X12" 2 MIL S-1701	1	1	EA
5	037-00016	SNAP-LOK ASSY, WORM CLAMP 2 TO 12-1/4DIA X 9/16W	1	2	EA
4	763-00042	BOLT 3/8-16X3/4 HEX S/S	2	4	EA
3	052-00295	NYLON WASHER 5/16" X 7/8" OD	2	4	EA
2	052-00295	NYLON WASHER 5/16" X 7/8" OD	2	4	EA
1	035-00008	FLARED LEG BRACKET, NO BOLT, NO WASHER D02299	2	4	EA
ITEM NO.	PART NUMBER	DESCRIPTION	DWG QTY.	KIT QTY	UNITS

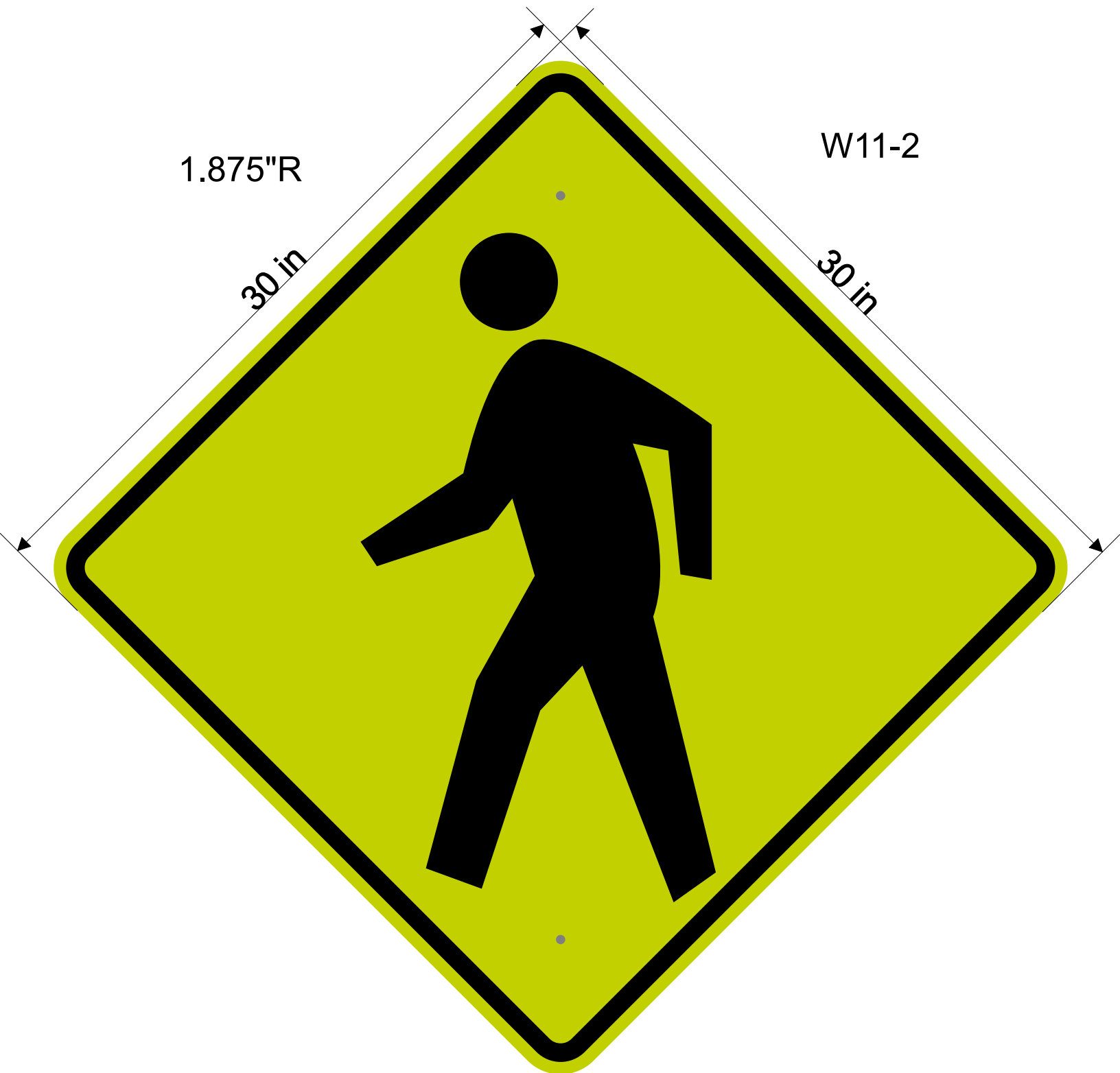
TAPCO
TRAFFIC & PARKING CONTROL CO., INC.

MATERIAL	STAINLESS STEEL	INTERPRET GEOMETRIC TOLERANCING PER: ASME Y14.5-2009
FINISH	RAW	REFERENCE:

TOLERANCE UNLESS OTHERWISE SPECIFIED		TITLE:			
HOLE ϕ	$\pm .003$	SIGN MOUNTING KIT, BANDED, FLARE LEG, STANDARD, FOR MOUNTING B2B STATIC SIGNS TO A LARGE POLE			
DEC.	INCH	DESIGNED BY:	TAPCO	SIZE	DWG. NO.
X	$\pm .030$	DRAWN BY:	C. GRAVES	B	107265
XX	$\pm .015$	CHECKED BY:	J. PATTERSON		
XXX	$\pm .005$			C	SCALE: 1:2
ANGULAR	$\pm 0.5^\circ$				REV WEIGHT:

PROPRIETARY AND CONFIDENTIAL THE INFORMATION CONTAINED IN THIS DRAWING IS THE SOLE PROPERTY OF TAPCO. ANY REPRODUCTION IN PART OR AS A WHOLE WITHOUT THE WRITTEN PERMISSION OF TAPCO IS PROHIBITED. SHEET 1 OF 1

8 7 6 5 4 3 2 1



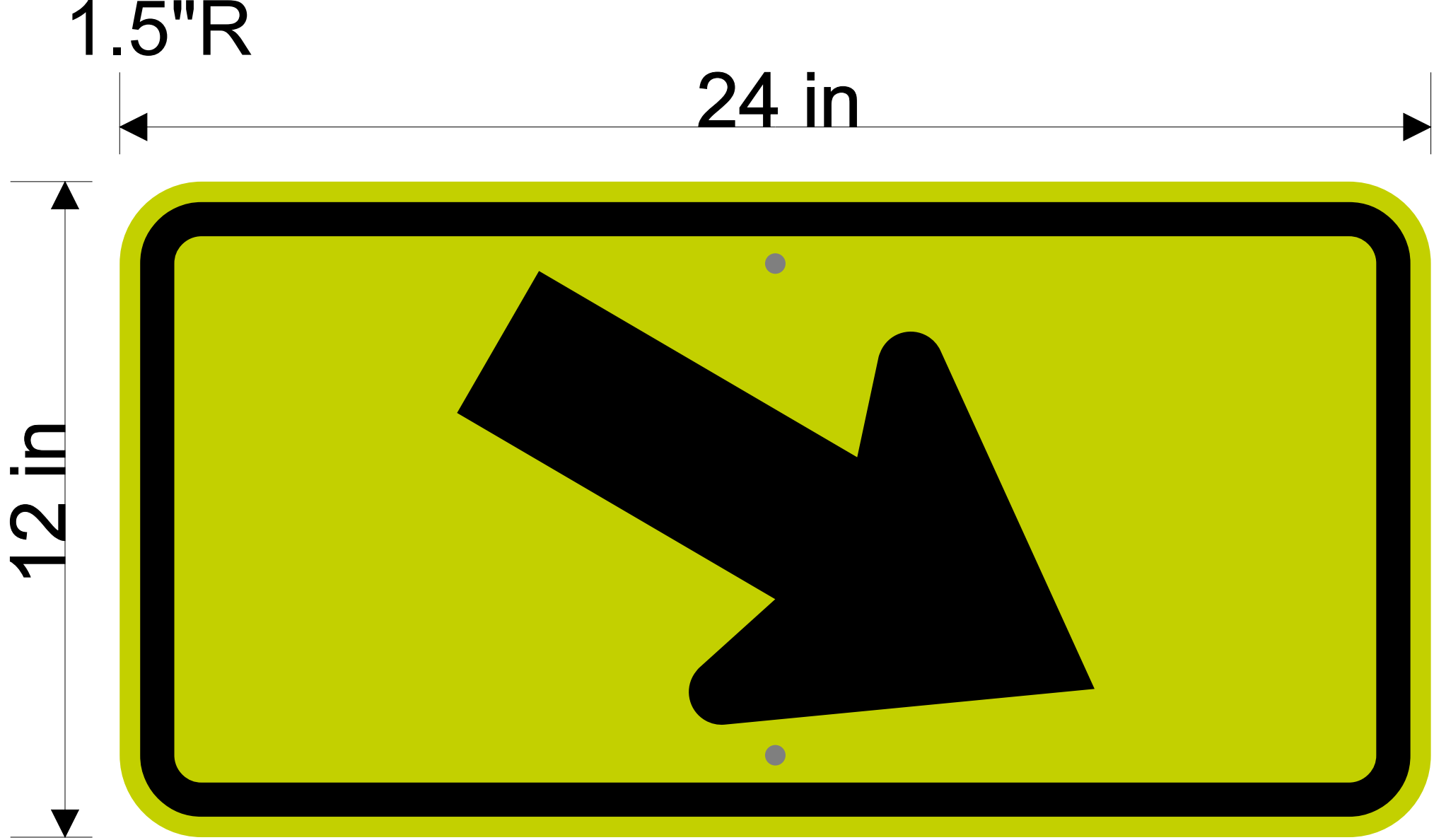
1.875"R

W11-2

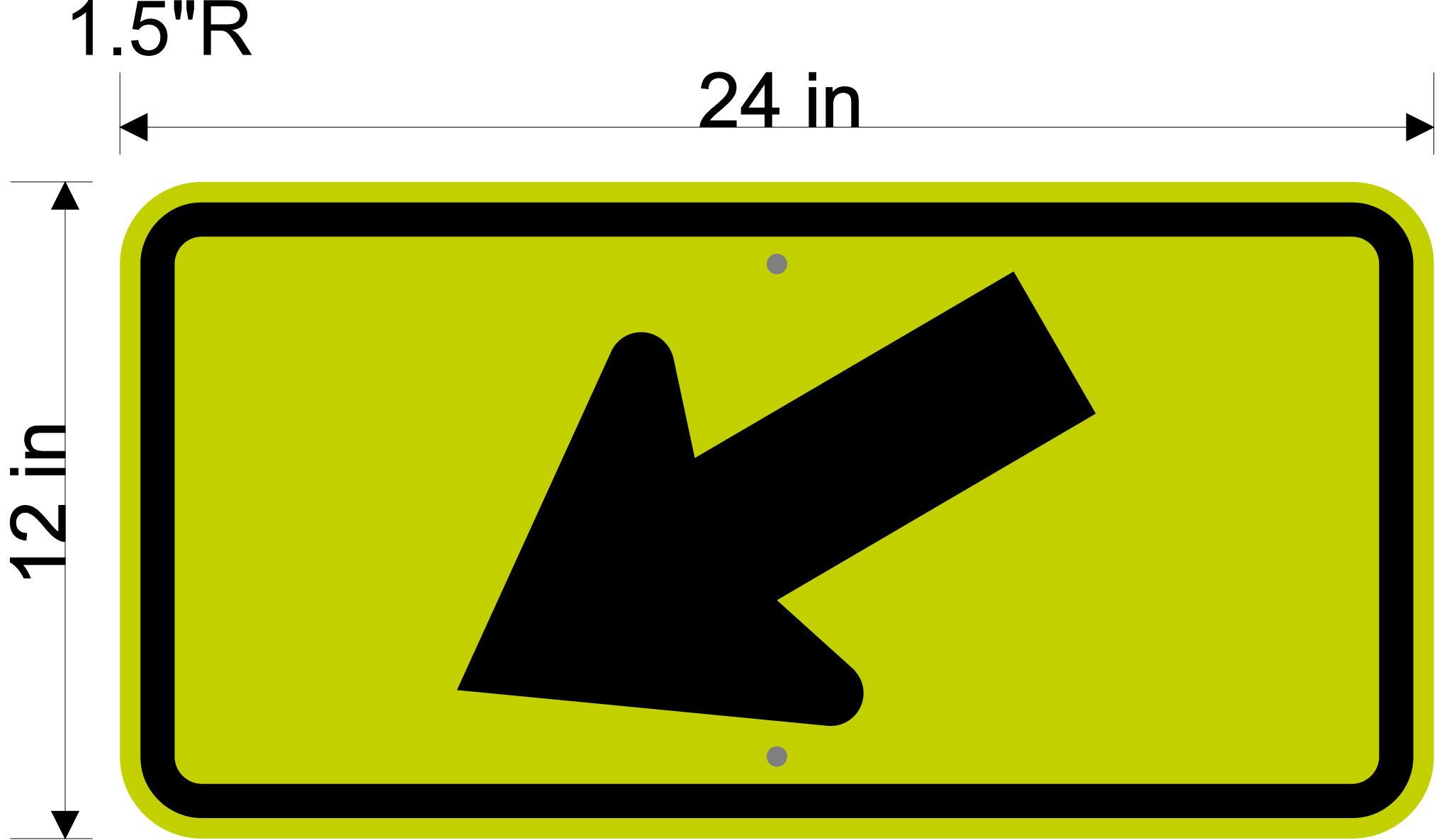
30 in

30 in

30" Diamond, 1.875" Rad
w/(2) 3/8" holes 30" apart on center
Sheeting: DG3 Fluor. Yellow-green



24"x12" .080 gauge, 1.5" Rad
w/(2) 3/8" holes 1.5" in
Sheeting: DG3 Fluor. Yellow-green



24"x12" .080 gauge, 1.5" Rad
w/(2) 3/8" holes 1.5" in
Sheeting: DG3 Fluor. Yellow-green